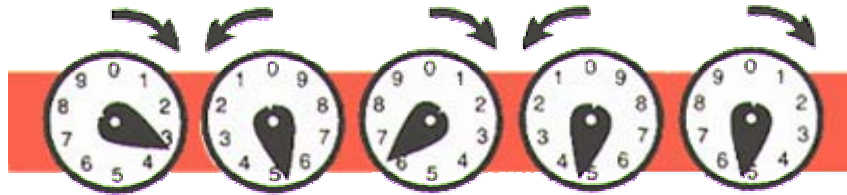


To take a reading, remember these guidelines:

1. Record the numbers for each dial going from right to left.
2. Always read the numbers in the direction the arrow on the dial is pointing.
3. When a dial pointer is between two numbers, always record the smaller number.
4. If a pointer is directly on a number, check the dial immediately to the right. The pointer on the right dial must have reached or passed zero for you to record the number on the left dial. If the pointer on the right dial has not passed zero, you need to write in the smaller number from the left dial.



The correct reading is 35645